

BROKK 800S

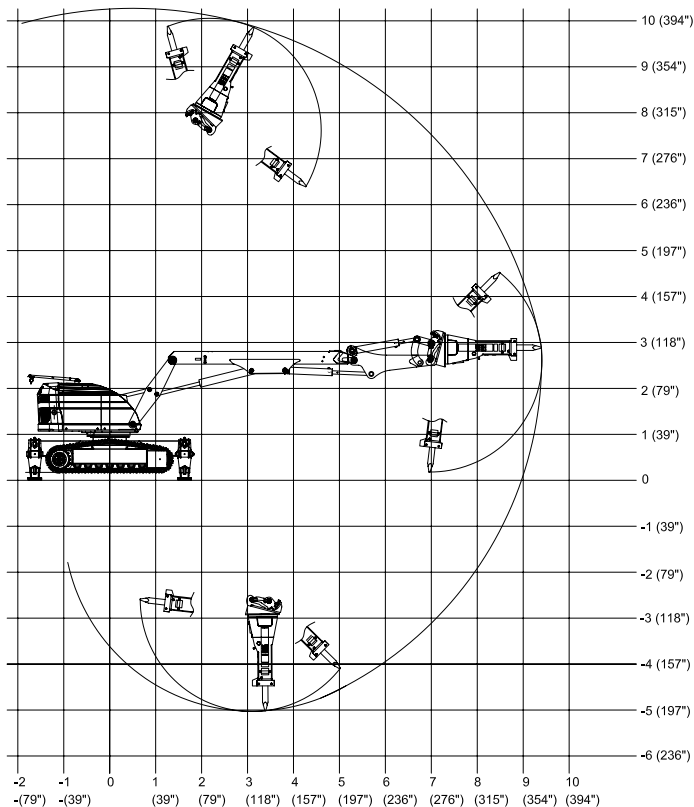


A New Dimension in Heavy Demolition

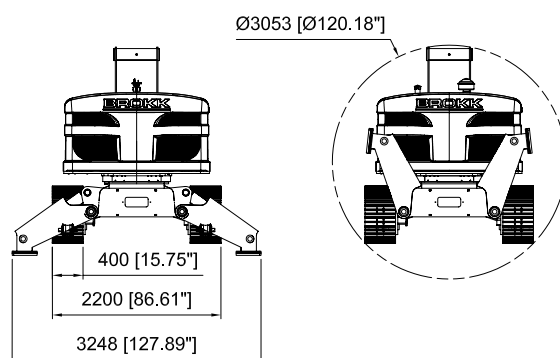
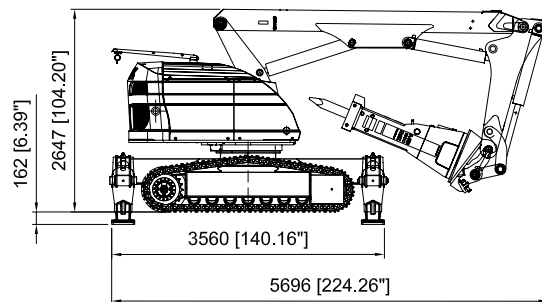
With the **BROKK 800S**, a whole new realm of application opens up in heavy demolition and underground applications. Large size and unmatched capacity make the Brokk 800S ideal for the heaviest and most demanding work. It weighs in at a hefty eleven tons with an arm that reaches a whopping 10 meters. All this bulk and reach is coupled with equally impressive power. Equipped with the MB 1200 breaker, the Brokk 800S delivers more punch than any other remote controlled demolition robot on the market.

- World's largest remote-controlled demolition machine
- The ultimate machine for tough underground and construction work
- Unparalleled reach for its size
- Powerful 1,200 kg breaker
- Available with diesel or electric power
- Brokk SmartRemote™

RANGE



SIZE



TECHNICAL DATA

Hydraulic breaker in illustrations
Load and stability diagram available on request

MB 1200

Performance

Slewing speed 16 sec/360°
Transport speed, max. 3,3 km/h; 2 mph
Climbing inclination, max. 30°

Hydraulic system

Hydraulic system capacity 240 l; 63.4 US gal
Pump type Variable load-sensing
System pressure 18,5 MPa; 2 683 psi
Increased pressure to attachment 25 MPa; 3 626 psi
Pump flow Diesel/50Hz el. motor 140 l/min; 37 US gal/min
60Hz el. motor 168 l/min; 44 US gal/min

Power system

Electric motor type ABB
Motor rating* 45 kW
Rated current* 81 A
Power consumption* 0-45 kW
Starting device Direct start

Diesel performance - option

Type Four-cylinder, water-cooled, 4-stroke engine
Engine 74 kW; 99 hp diesel EPA Tier 3, EU Stage IIIA
Fuel tank capacity 80 l; 21 US gal
Engine oil volume with and without filter change 13,2 l; 3.5 US gal
Coolant volume 9 l; 2.4 US gal
Freezing point -40°C; -40°F

Control system

Control type SmartRemote, portable control
Signal code Digital
Transfer Professional radio/Cable
Range, radio Up to 300 m

Weight

Machine weight** 11 050 kg; 24 361 lbs
Recommended attachment weight 1 200 kg; 2 646 lbs

Noise level

Sound power level L_{WA} *** El: 99 dB(A)
Diesel: 103 dB(A)

*Valid for 400V/50Hz and 440V/60Hz

**Excluding options and attachment

***Measured according to directive 2000/14/EC, excl. attachment

OPTIONS

Arm System

Impact and heat protection for cylinder C2 and C3

Undercarriage

Steel caterpillar tracks

Heat resistance

Forced draft cooling of machine

Other options

Air flushing through breaker to protect from dust
Particulate filter
Extra hydraulic function
Drainage hose
CAN cable connection for tools
Lifting eyes (regular lifting points are standard)

TOOLS

