

BROKK 800P

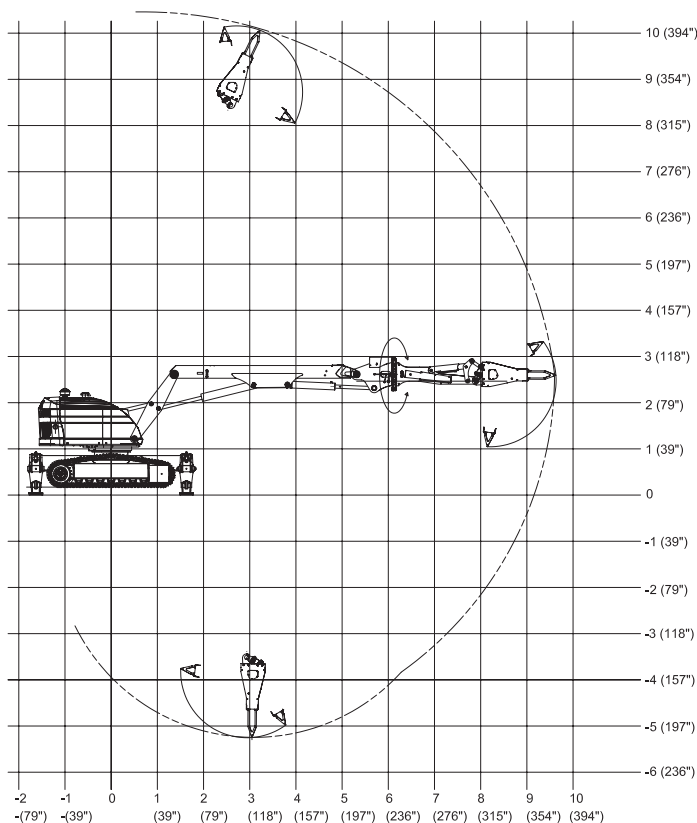


A True Process Beast

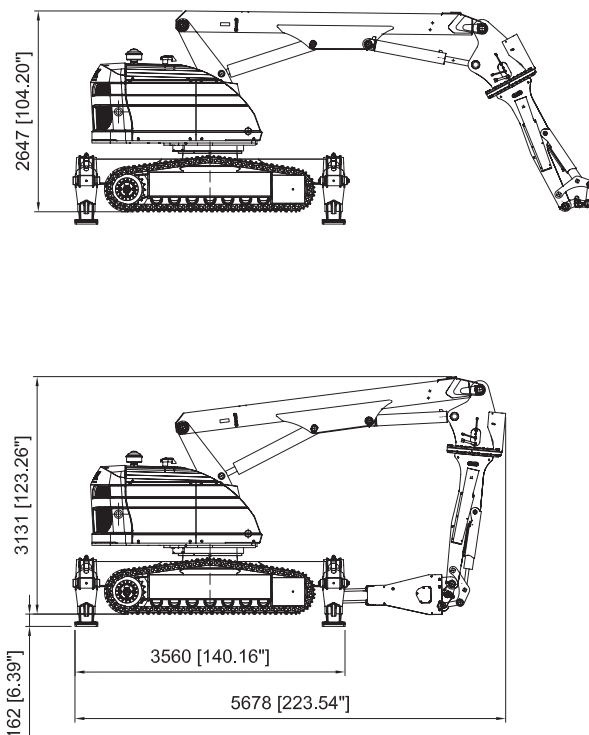
The **BROKK 800P** is the heavy industry champion of the Brokk family. With a weight of 11 tons, 360 degree arm rotation and a reach measuring an incredible 10 meters, it's a game changer for metal processing applications. The Brokk 800P has an unparalleled capacity for heavy, demanding demolition and maintenance work. Its precision operation makes sure no unwanted damage occurs. When equipped with Brokk's unique process breaker with heat and impact protection, it's unmatched in its ability to handle hot ladles, converters, runners and furnace work.

- Designed specifically for tough metal process applications
- Rotation boom system for optimal flexibility
- Patented heat-shielded process breaker
- Precision operation to avoid damage
- Available with diesel or electric power
- Brokk SmartRemote™

RANGE



SIZE



TECHNICAL DATA

Hydraulic breaker in illustrations
Load and stability diagram available on request

BHB 455

Performance

Slewing speed	16 sec/360°
Transport speed, max.	3,3 km/h; 2 mph
Climbing inclination, max.	30°

Hydraulic system

Hydraulic system capacity	240 l; 63.4 US gal
Pump type	Variable load-sensing
System pressure	18,5 MPa; 2 683 psi
Increased pressure to attachment	25 MPa; 3 626 psi
Pump flow	Diesel/50 Hz el. motor 140 l/min; 37 US gal/min
	60 Hz el. motor 168 l/min; 44 US gal/min

Power system

Electric motor type	ABB
Motor rating*	45 kW
Rated current*	81 A
Power consumption*	0-45 kW
Starting device	Direct start

Diesel performance – option

Type	Four-cylinder, water-cooled, 4-stroke engine
Engine	74 kW; 99 hp diesel EPA Tier 3, EU Stage IIIA
Fuel tank capacity	80 l; 21 US gal
Engine oil volume with and without filter change	13,2 l; 3.5 US gal
Coolant volume	9 l; 2.4 US gal
Freezing point	-40°C; -40°F

Control system

Control type	SmartRemote, portable control
Signal code	Digital
Transfer	Professional radio/Cable
Range, radio	Up to 300 m

Weight

Machine weight (diesel)**	11 300 kg; 24 912 lbs
Recommended attachment weight	600 kg; 1 323 lbs

Noise level

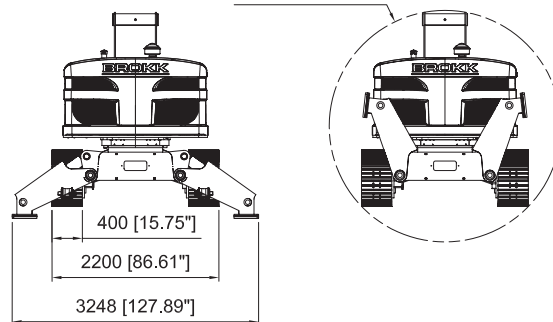
Sound power level L_{WA} ***	El: 99 dB(A)
	Diesel: 103 dB(A)

*Valid for 400V/50Hz and 440V/60Hz

**Excluding options and attachment

***Measured according to directive 2000/14/EC, excl. attachment

Ø3053 [Ø120.18"]



OPTIONS

Arm System

Impact and heat protection for cylinder C2 and C3

Undercarriage

Steel caterpillar tracks

Heat resistance

Heat resistant hoses for hydraulic breaker
Forced draft cooling of machine
Forced draft cooling of breaker

Other options

Particulate filter
Lifting eyes (regular lifting points are standard)

TOOLS

