

/ BROKK DESCALER

The Brokk Descaler is a new product to the Brokk range, initially developed to avoid hazardous descaling in the preheater tower in the cement industry but turned out to be ideal for any vertical vessel in the processing industry. The product evolved from the Brokk robot into a new solution with a telescopic boom for outstanding reach and remote-controlled maneuvering. Hundreds of tons of overhead refractory can be removed with zero physical contact and at a much faster pace than doing the same task manually. The Brokk Descaler comes in a single and a twin version that allows for descaling in vessels up to 9.5 m in diameter.

- Eliminate the risk of falling debris for workers.
- Improve production capacity by reducing shutdown time
- Minimize exposure to dust for workers
- Installation in less than 3 hours



Hydraulic breaker in illustrations: BHB 55
Load and stability diagram available on request



TECHNICAL DATA

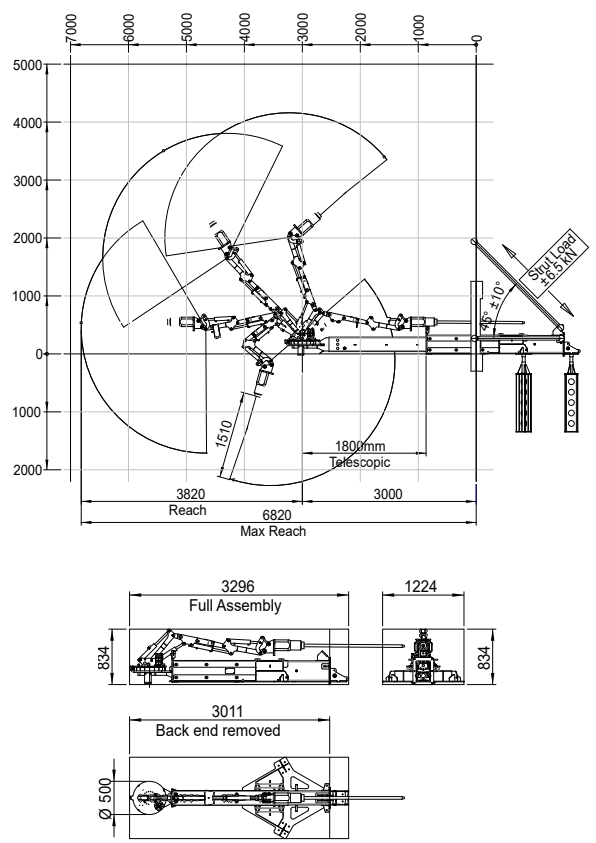
Slewing speed	18 sec/360°
Transport speed, max.	2.7 km/h; 1.7 mph
Climbing inclination, max.	30°
Hydraulic system capacity	27 l; 7.1 US gal
Pump type	Variable load-sensing
System pressure	18 MPa; 2611 psi
Pump flow 50 Hz	27 l/min; 7 US gal/min
60 Hz	32 l/min; 8 US gal/min
Power technology	SmartPower™
Electric motor type	ABB
Power*	9.8 kW
Recommended fuse size*	16 A
Starting device	Direct start
Control type	SmartRemote™, portable
Signal code	Digital
Transfer	Professional radio/Cable
Range, radio	Up to 300 m
Machine weight**	Single 743 kg; 1630 lbs
	Twin 900 kg; 1984 lbs
Power pack	390 kg; 859 lbs
Recommended attachment weight	80 kg; 175 lbs
Sound power level L_{WA}***	90 dB(A)

*Valid for 400 V/50 Hz and 440 V/60 Hz

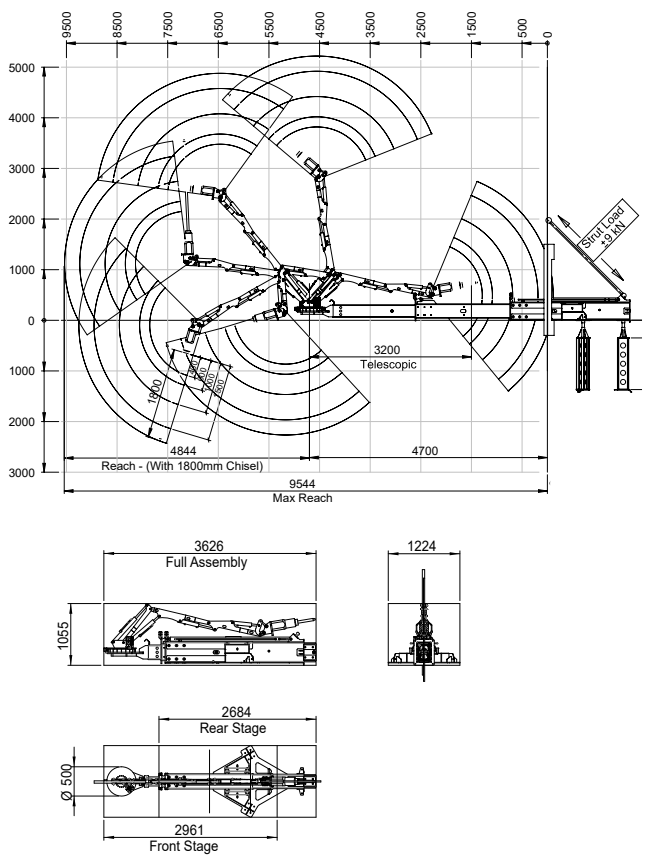
**Excluding attachment and extra equipment

***Measured according to directive 2000/14/EC

SINGLE



TWIN



Tolerances for technical data may vary