

/ BROKK 200 PEDESTAL BOOM

Like any Brokk robot, the Brokk 200 Pedestal Boom offers great flexibility in underground and confined space applications. With the machine body of a Brokk robot mounted on a pedestal it is adapted to suit primary breaking at mobile crushers, jaw crushers and grizzlies. The option of easy attachment changes and remote maneuvering with video and audio feedback makes it the ultimate plug-and-play solution for rock breaking at crushers and grizzlies.

- Small footprint
- 360 degrees slewing
- Perfect for spaces with low headroom
- Plug-and-play solution



Hydraulic breaker in images: BHB 305
Load and stability diagram available on request

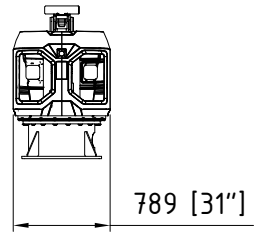
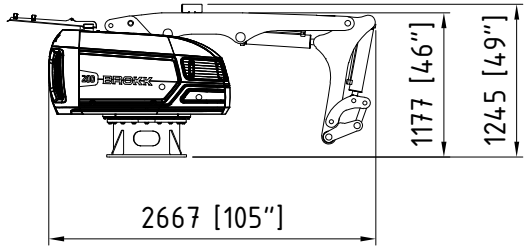


TECHNICAL DATA

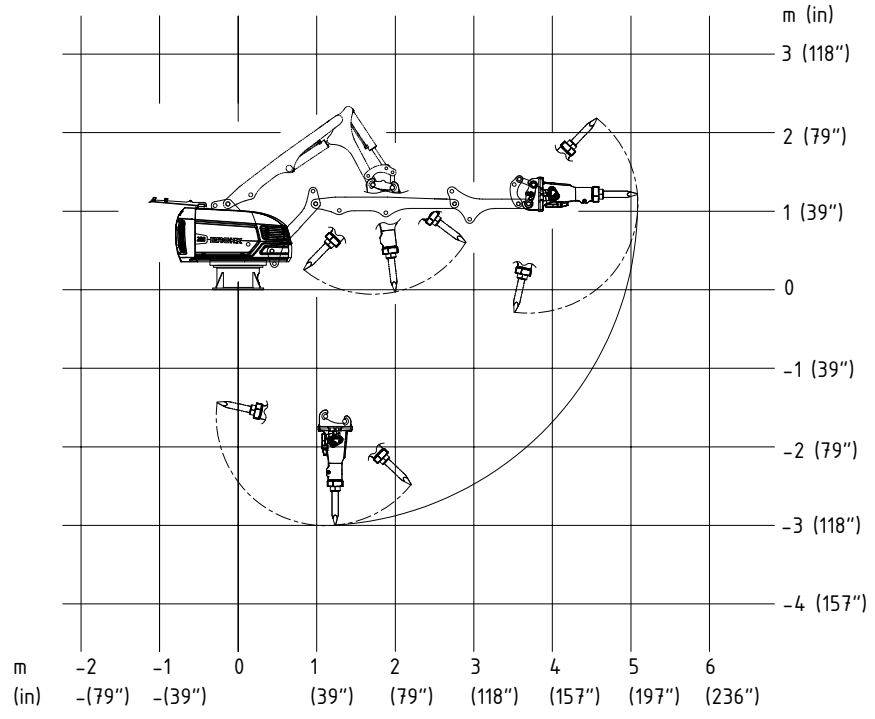
Slewing speed	10 sec/360°
Hydraulic system capacity	85 l; 22.5 US gal
Pump type	Variable load-sensing
System pressure	18 MPa; 2611 psi
Increased pressure to attachment	23 MPa; 3336 psi
Pump flow 50 Hz	85 l/min; 22.5 US gal/min
60 Hz	102 l/min; 27 US gal/min
Power*	27.5 kW
Recommended fuse size*	63 A
Machine weight**	1380 kg; 3042 lbs
Recommended attachment weight	350 kg; 772 lbs

*Valid for 400 V/50 Hz and 440 V/60 Hz
 **Excluding options and attachment

SIZE



REACH



Tolerances for technical data may vary